

- Rx Entry
- Blocking
- Deblocking & Alloy Recovery
- Generating
- Fining & Polishing
- Hard Coating
- AR Coating
- Tracing
- Edging

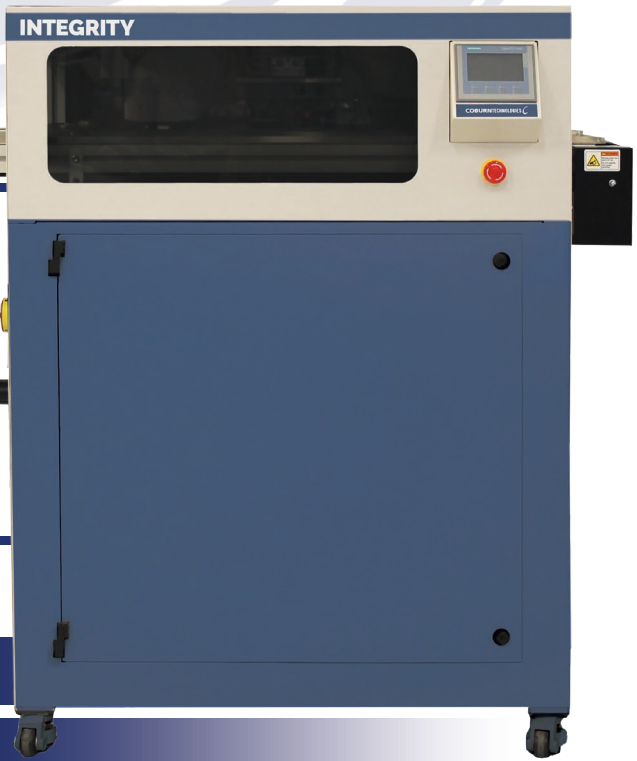
INTRODUCING THE **NEW**

INTEGRITY

ALLOY RECOVERY SYSTEM



Clean,
Waterless
Alloy Recovery

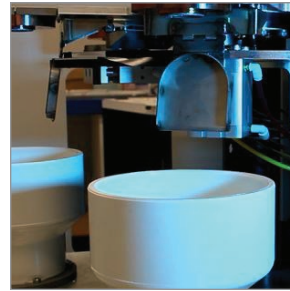
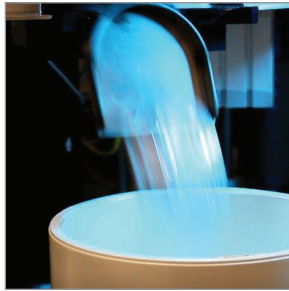
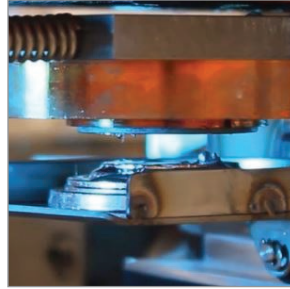
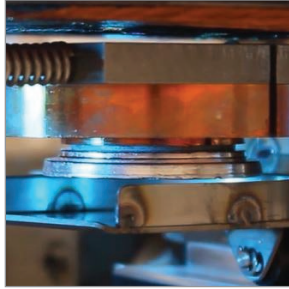


- > Removes alloy with induction heating
- > Alloy remains completely intact
- > Collection of alloy and blocks for easy reuse

| | Power | Air | Dimensions | Weight | Throughput |
|------------------|--|------------------------------------|---|-----------------|--------------|
| INTEGRITY | Single Phase, 16A, 208-230V, 50/60Hz (one outlet req.) | 85-100 psi 6.9 bar, 1.5 SCFM | 78" W x 55" D x 52" H 1975 x 1392 x 1310mm | 750lbs 340kg | Up to 240/hr |

INTEGRITY

ALLOY RECOVERY SYSTEM



Waterless Alloy Recovery

Blocks with alloy are automatically rotated through an induction heating station, melting a very thin layer of alloy where it engages the block, allowing the alloy puck to separate cleanly and completely intact.

Clean & Ecofriendly

Separated alloy remains completely intact in a waterless system, eliminating splashes of molten alloy in your lab.

Automated Alloy & Block Handling

Alloy pucks and blocks are safely dropped into separate collection bins and ready for use in a lens blocker.

Automated Post Polishing System

Add Integrity to Coburn's Automated Post Polishing System. Blocks with alloy are diverted into Integrity for alloy recovery and block collection. Lenses pass through Integrity's conveyor and passed on to the Duality De-Taper & Cleaner, and coated in the Velocity Spin Coater. This full system processes 60 jobs per hour (120 lenses).



DIAGNOSTICS



SURFACING



COATING



FINISHING



CONSUMABLES



SERVICE